



119 South 7th Street, St. James, MN 56081
 Phone: 507-375-3171 - Fax: 507-375-5400
 Website: www.mayberryrealty.net
 Email: mayberry@myclearwave.net



Long Lake Lots for Sale

Lot Sizes: Irregular – See Map

Owners: Anderson, etal

Description: These are fantastic lots located on a great lake, they are very buildable, they have Rural Water and electricity into the lots. We would appreciate the chance to spend a little time giving you a tour of this site.



Lot 4, Blk 1, The Reserve

Sale Price: \$150,000
14 Taxes: \$1,514 NHS
Spec: \$702.96 RW

Lot 5, Blk 1, The Reserve

Sale Price: \$150,000
14 Taxes: \$1,514 NHS
Spec: \$702.96 RW

Lot 1, Blk 2, The Reserve

Sale Price: \$50,000
14 Taxes: \$1,514 NHS
Spec: \$702.96 RW

For more information call or stop in at Mayberry Realty
 Tom Mayberry Home Phone (507) 375-4860
 Gary Sturm Home Phone (507) 375-5467
 Kelly Brown Home Phone (507) 317-5590

Visit our Website at www.mayberryrealty.net

Remarks: The information on this sheet is believed to be accurate, but we are not responsible for any errors regarding this information.

THE RESERVE

IN THE S.E. 1/4, SW 1/4 & N COY'T LOT 1
& N COY'T LOT 1 OF SEC. 14, ALL IN T. 105,
WATONIAN COUNTY, MINNESOTA

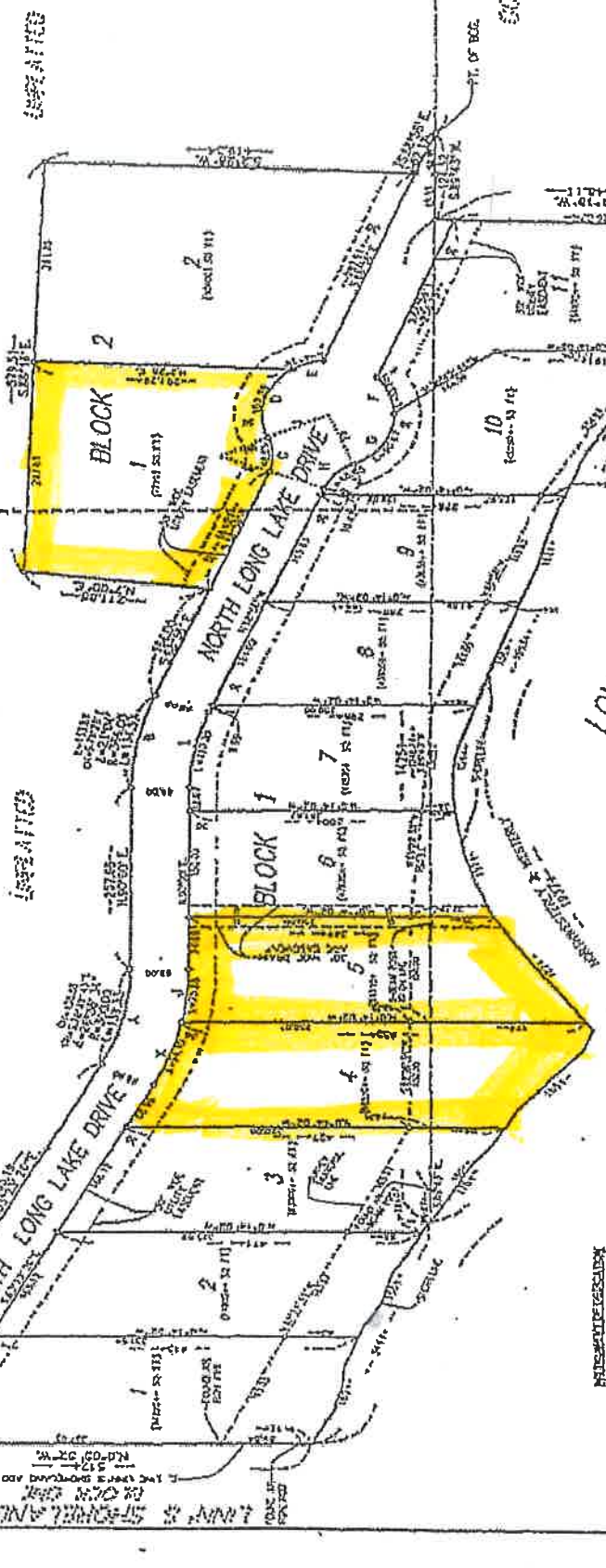
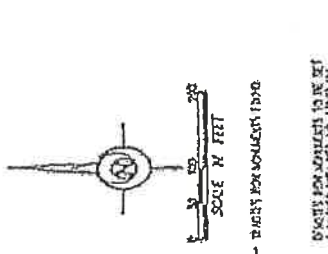
01101

- CORNER MARKS
- 1 1-1333 1-1334 1-1335 1-1336 1-1337 1-1338 1-1339 1-1340 1-1341 1-1342 1-1343 1-1344 1-1345 1-1346 1-1347 1-1348 1-1349 1-1350 1-1351 1-1352 1-1353 1-1354 1-1355 1-1356 1-1357 1-1358 1-1359 1-1360 1-1361 1-1362 1-1363 1-1364 1-1365 1-1366 1-1367 1-1368 1-1369 1-1370 1-1371 1-1372 1-1373 1-1374 1-1375 1-1376 1-1377 1-1378 1-1379 1-1380 1-1381 1-1382 1-1383 1-1384 1-1385 1-1386 1-1387 1-1388 1-1389 1-1390 1-1391 1-1392 1-1393 1-1394 1-1395 1-1396 1-1397 1-1398 1-1399 1-1400 1-1401 1-1402 1-1403 1-1404 1-1405 1-1406 1-1407 1-1408 1-1409 1-1410 1-1411 1-1412 1-1413 1-1414 1-1415 1-1416 1-1417 1-1418 1-1419 1-1420 1-1421 1-1422 1-1423 1-1424 1-1425 1-1426 1-1427 1-1428 1-1429 1-1430 1-1431 1-1432 1-1433 1-1434 1-1435 1-1436 1-1437 1-1438 1-1439 1-1440 1-1441 1-1442 1-1443 1-1444 1-1445 1-1446 1-1447 1-1448 1-1449 1-1450 1-1451 1-1452 1-1453 1-1454 1-1455 1-1456 1-1457 1-1458 1-1459 1-1460 1-1461 1-1462 1-1463 1-1464 1-1465 1-1466 1-1467 1-1468 1-1469 1-1470 1-1471 1-1472 1-1473 1-1474 1-1475 1-1476 1-1477 1-1478 1-1479 1-1480 1-1481 1-1482 1-1483 1-1484 1-1485 1-1486 1-1487 1-1488 1-1489 1-1490 1-1491 1-1492 1-1493 1-1494 1-1495 1-1496 1-1497 1-1498 1-1499 1-1500

CONF'L LOT 1, SEC. 11

SE 1/4 SW 1/4 SEC. 11

CONF'L LOT 1, SEC. 14



INTRODUCTORY STATEMENT
NOW ALL MEN THESE PRESENTS... [The rest of the text is illegible due to the image's orientation and resolution.]

MELANIE LUTER
NOTARIAL PROFESSION
COMMISSION EXPIRES [illegible]

[Signatures and notary stamps are present here.]

MARY JEAN [illegible]
NOTARY PUBLIC
COMMISSION EXPIRES [illegible]

[Signatures and notary stamps are present here.]

[Additional text and signatures at the bottom of the page, including a 'RECEIVED' stamp.]

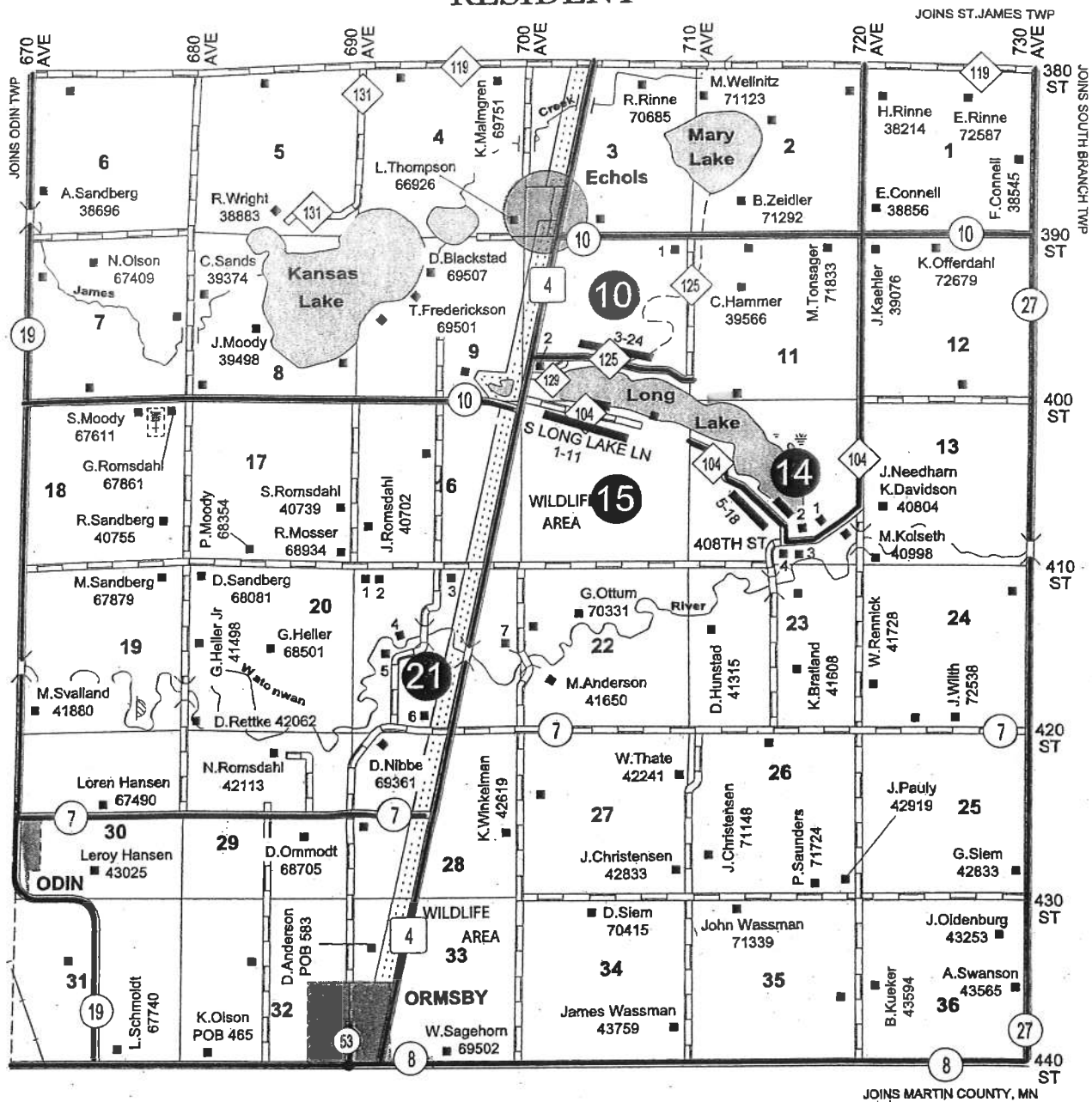
WATONIAN COUNTY RECORDS DEPARTMENT
1978 OCT 11 10 30 AM

LONG LAKE TWP

T 105 N

RESIDENT

R 32 W



LAND OWNER & RURAL RESIDENT MAPS

- Section 10**
1. R. Aden - 70927
 2. B. Mohlenbrock - 39832
- LONG LAKE RD & DR**
3. C. Friesen - 70078
 4. C. Anderson - 70157
 5. G. Johnson - 70163
 6. G. Nelson - 70219
 7. V. Krenz - 70231
 8. C. Olenius - 70321
 9. P. Skow - 70351
 10. J. Jensen - 70441
 11. T. Julian - 70473

12. V. Jungemeyer - 70507
13. K. Henderson - 70667
14. I. Brown - 70687
15. D. Kulseth - 70709
16. J. Dahl - 70729
17. B. Friesen - 70753
18. T. Mace - 70817
19. G. Linn - 70835
20. T. Nelson - 70885
21. J. Anderson - 70913
22. L. Overson - 70965
23. T. Westman - 70997
24. P. Anderson - 71195

- Section 14**
1. D. Schwarz - 71698
 2. L. Larson - 71808
 3. M. Friesen - 71891
 4. S. Bald - 71665
- E. LONG LAKE LN**
5. L. Olson - 40100
 6. K. Nelson - 40136
 7. L. Peterson - 40166
 8. C. Brown - 40180
 9. G. Goldschmidt - 40206
 10. J. Sawatzky - 40234
 11. M. Runge - 40306
 12. L. Groslags - 40336
 13. U. Neisen - 40486
 14. T. Mayberry - 40510
 15. L. Menssen - 40560
 16. G. D. Wolner - 40582
 17. M. Nordby - 40668
 18. M. L. Knickrehm - 40718

- Section 15**
- S. LONG LAKE LN**
1. L. Hansen - 70220
 2. S. Westman - 70238
 3. W. D. Sing - 70274
 4. E. Engelking - 70280
 5. D. Litzner - 70298
 6. R. Downs - 70310
 7. S. Jeppson - 70364
 8. L. Paxton - 70382
 9. C. Mueller - 70406
 10. B. Johnson - 70412
 11. O. Howe - 70598

- Section 21**
1. J. Romsdahl - 68983
 2. K. Romsdahl - 69003
 3. W. Romsdahl - 41116
 4. R. Romsdahl - 41539
 5. G. Sieve - 41757
 6. H. Schmoltdt - 69404
 7. G. Oliver - 41481

R 33 W	R 32 W	R 31 W	R 30 W
ADRIAN	NELSON	RIVERDALE	MADEIRA
BUTTERFIELD	ST. JAMES	ROSENDALE	FIELDON
ODIN	LONG LAKE	SOUTH BRANCH	ANTRIM